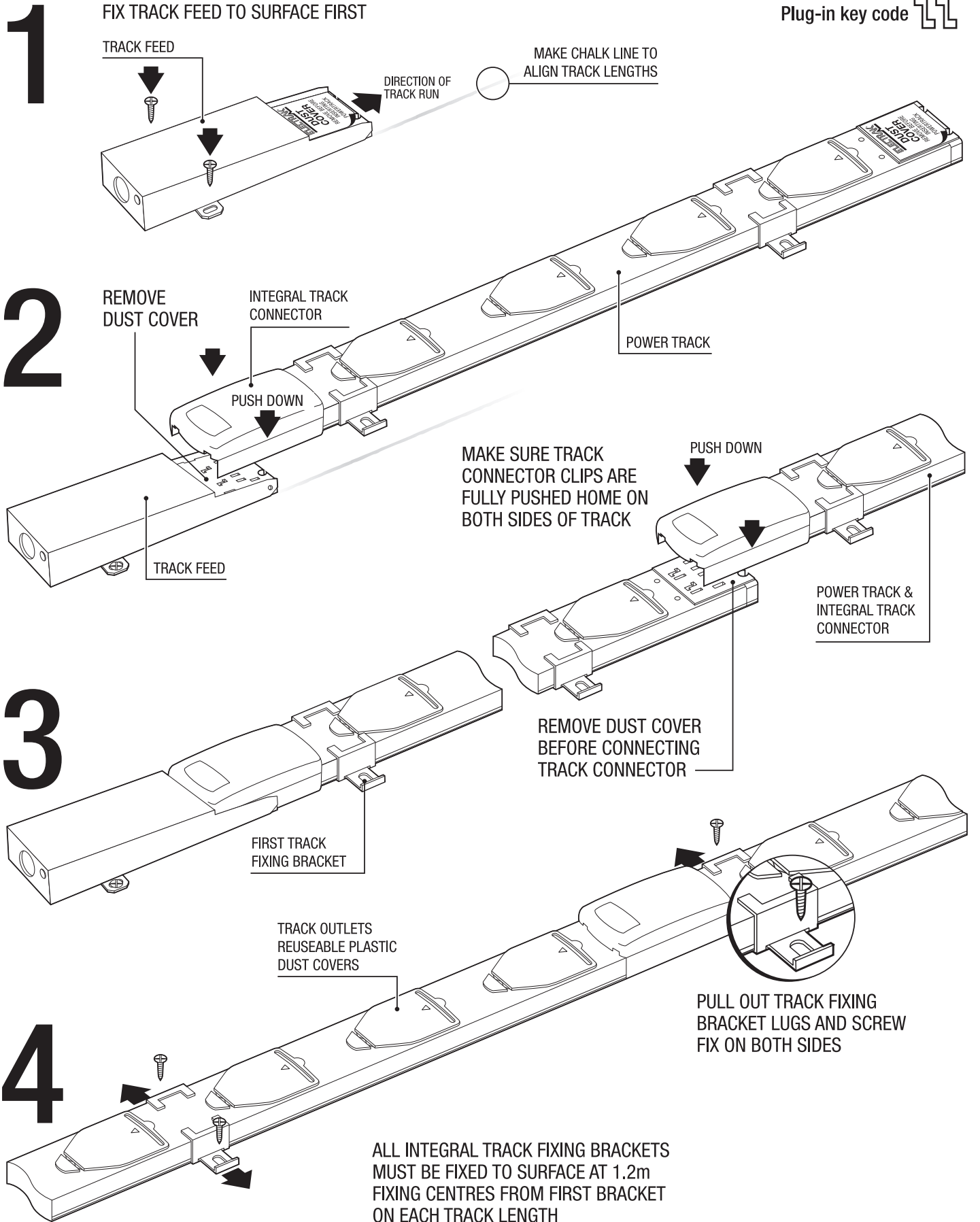
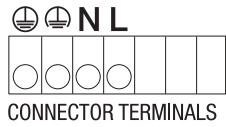


# Installation Sheet B3



# 5 TRACK FEED JF2010 SUB-CABLING



25mm Ø CABLE CONDUIT FIXING HOLE

PROTECTIVE EARTH MUST ALWAYS BE CONNECTED VIA THE EARTH TERMINAL BLOCK

TRACK FEED PROTECTIVE EARTH TERMINAL AND EARTH BOND

LIFT TERMINAL TAB TO ACCESS TERMINAL SCREWS AND CLOSE AFTER USE

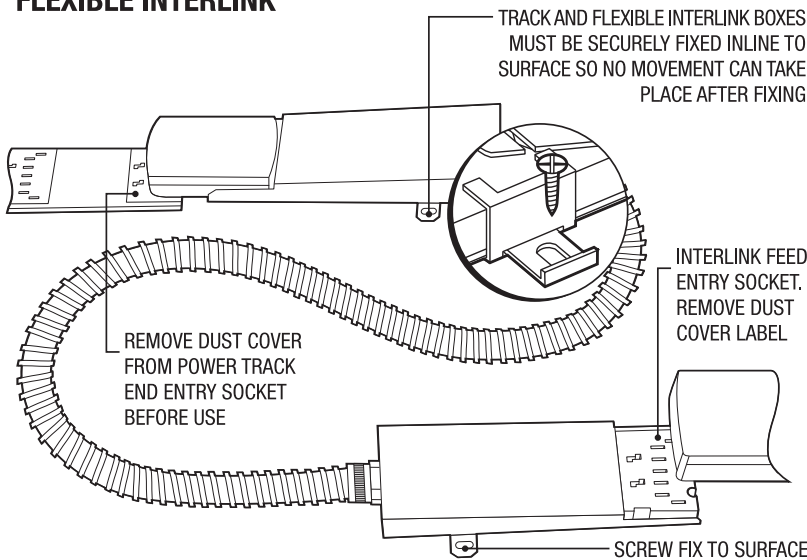
CLEAN EARTH

CLOSE LID AND SECURE WITH LID FIXING SCREW BEFORE POWER UP

LIFT LID

EACH TRACK FEED IS SUITABLE FOR A CONDUCTOR UP TO 16mm<sup>2</sup>. TIGHTEN ALL TERMINAL SCREWS SECURELY. TRACK FEED BOX MUST BE SECURELY FIXED TO SURFACE BEFORE CONDUIT OR CABLES ARE ATTACHED TO IT. DO NOT POWER UP UNTIL TRACK IS INSTALLED.

## FLEXIBLE INTERLINK



## IMPORTANT WARNINGS

### A. ISOLATION

Isolate the circuit supply wiring at the distribution point.

### B. INSTALLATION AND TESTING

The system should be installed, tested and maintained by a qualified electrician or other competent person in accordance with BS7671:2008 (IEE wiring regulations).

### C. PROTECTION

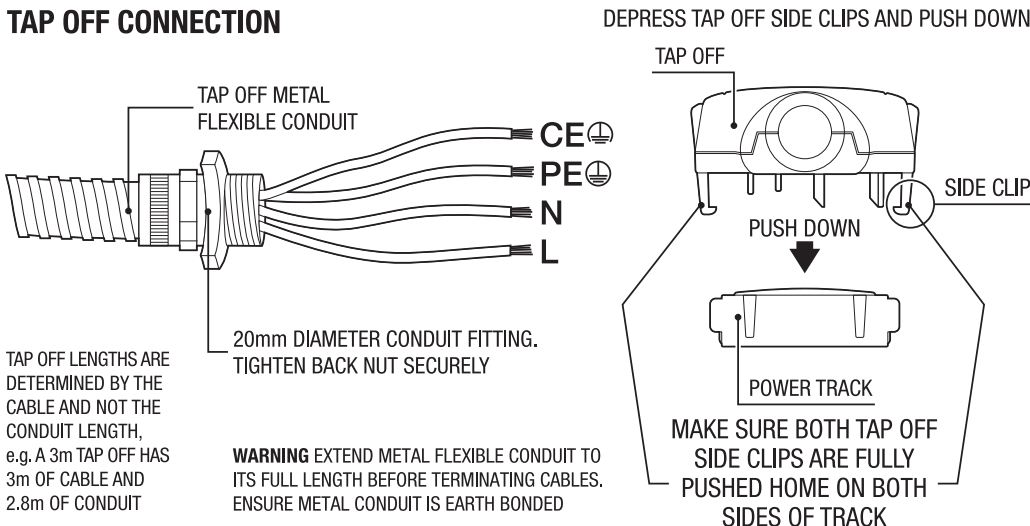
The circuit must be protected by a suitably rated fuse or circuit breaker in accordance with BS7671:2008 (IEE wiring regulations).

### D. DIFFERENT PHASES

Where track runs or floorboxes, that can be reached simultaneously, are supplied by different phases the system must carry warning notices as required by reg. 514.10.1 of BS7671:2008 (IEE wiring regulations).

E. See technical data sheet B1 for volt drop, earth fault loop impedance values and all other technical details.

## TAP OFF CONNECTION



**NOTE** TRACK FIXING BRACKETS ARE FOR SLAB MOUNTING ONLY.

FOR INFORMATION ON OTHER FIXING METHODS, ADDITIONAL INSTALLATION SHEETS OR TECHNICAL HELP CONTACT ELECTRAK.

FOR INFORMATION ON OTHER FIXING METHODS, ADDITIONAL INSTALLATION SHEETS OR TECHNICAL HELP CONTACT ELECTRAK.

Tel: 01207 503400 | Fax: 01207 501799 | Email: sales@electrak.co.uk | Web: www.electrak.co.uk

Because of our policy of continuous improvement, Electrak reserve the right to change product specification without notice